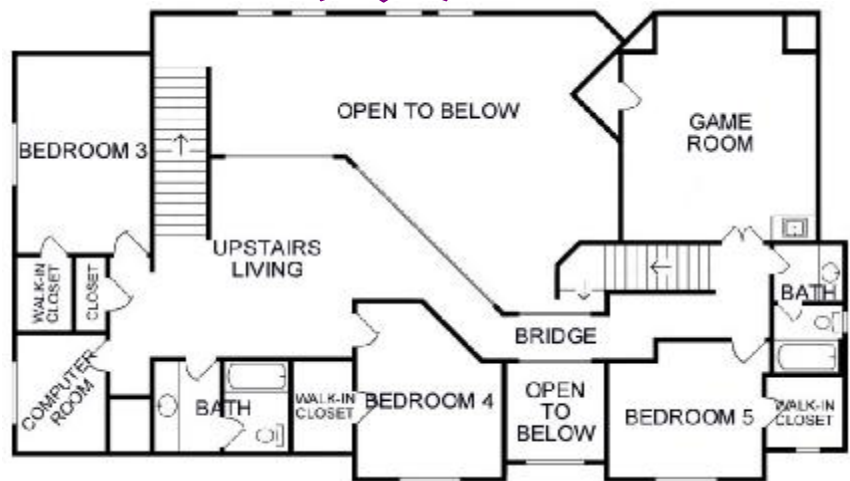


# Aspen Design



**100% Financing**

- 4,350 sq. ft. approx.
- 5 bedrooms
- 4½ bathrooms
- Study
- Spacious kitchen
- Walk-in pantry
- 2 dining
- Family room
- Upstairs living open to family room below
- Game room
- Computer room
- Laundry room
- 3 car garage
- Snack bar at kitchen counter
- Built-in pantry
- Whirlpool tub in master bath
- Walk-in closets in all bedrooms
- 2 Story entry
- Bridge over entry
- Gas fireplace
- Raised ceilings
- 2 x 6 exterior walls
- Double-pane windows
- Covered back patio and front porch



**Ask our Lender how \$500 can move you in this home!**

**Builder Sales**  
**Dee Hargis**  
**(405) 203-2110**  
E-mail: [Dee@BuilderSalesOKC.com](mailto:Dee@BuilderSalesOKC.com)  
WebSite: [www.BuilderSalesOKC.com](http://www.BuilderSalesOKC.com)