

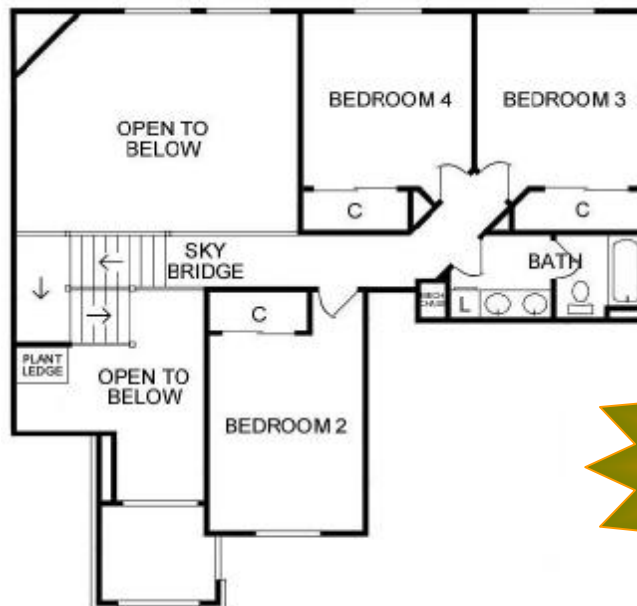
Elgin Design



100% Financing

- 2,750 sq. ft. approx.
- 4 bedrooms
- 2½ bathrooms
- Study
- Spacious kitchen
- 2 dining
- Walk-in pantry
- Great room
- Laundry room
- Grand 2 story entry
- 3 car garage

- Granite countertops in kitchen
- Snack bar at kitchen island
- Stainless steel appliances
- Whirlpool tub in master
- Skybridge open to great room and entry below
- Hardwood floor entry
- Raised ceilings
- Gas fireplace
- 2 x 6 exterior walls
- Double-pane windows
- Covered front porch



Ask our Lender how \$500 can move you in this home!

Builder Sales
Dee Hargis
(405) 203-2110
E-mail: Dee@BuilderSalesOKC.com
WebSite: www.BuilderSalesOKC.com