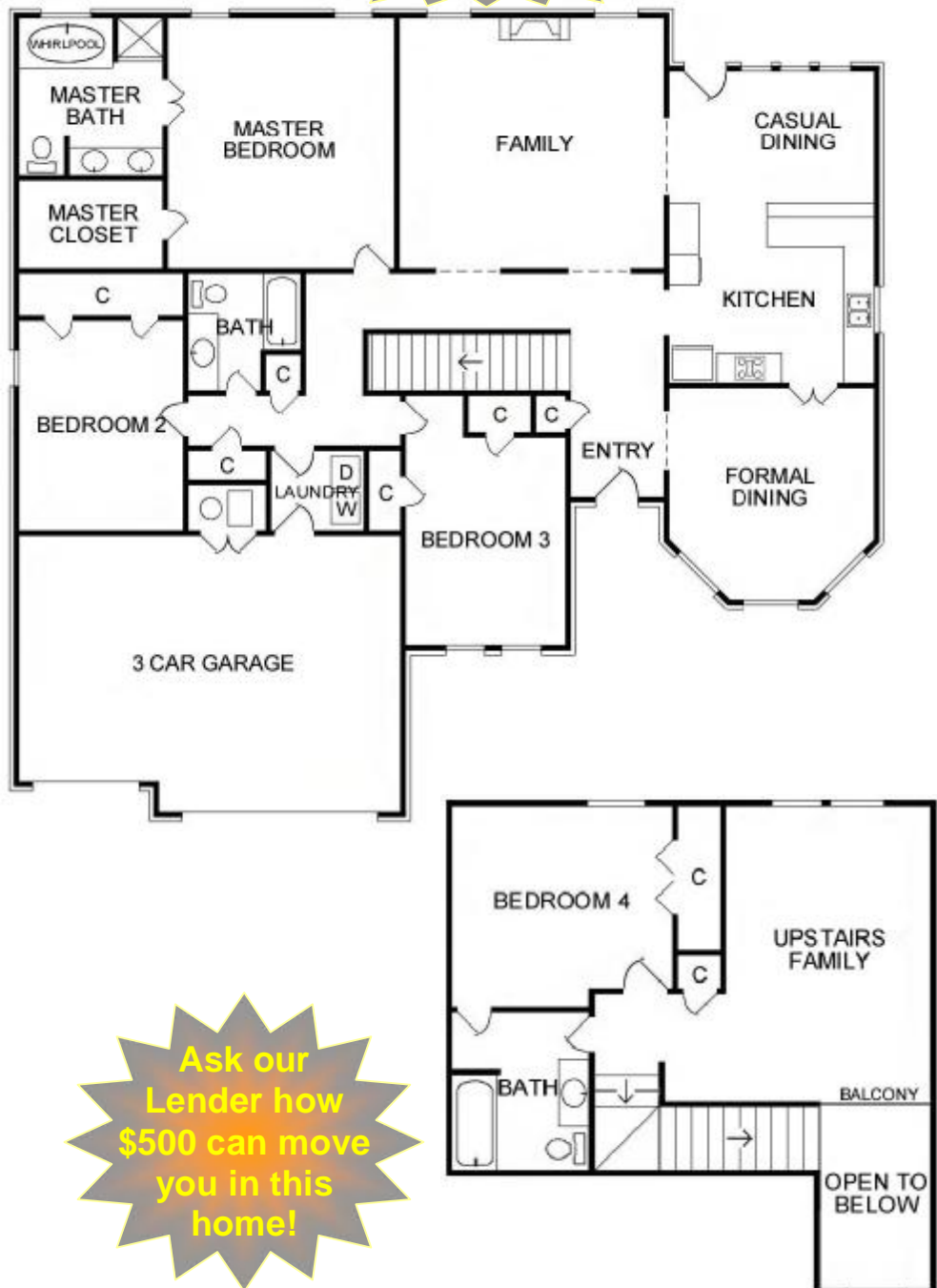


Lewisville Design

- 4,000 sq. ft. approx.
- 3 bedrooms
- 4th bedroom or study
- 3 bathrooms
- Spacious kitchen
- 2 dining
- 2 family rooms
- Laundry room
- 2 story entry
- 3 car garage
- Snack bar at kitchen counter
- Whirlpool tub in master bath
- 2 closets in master suite
- Lots of closet space
- 2 story entry
- Raised ceilings
- Gas fireplace
- 2 x 6 exterior walls
- Double-pane windows
- Covered back patio and front porch



100% Financing



Ask our Lender how \$500 can move you in this home!

Builder Sales
Dee Hargis
(405) 203-2110
E-mail: Dee@BuilderSalesOKC.com
WebSite: www.BuilderSalesOKC.com