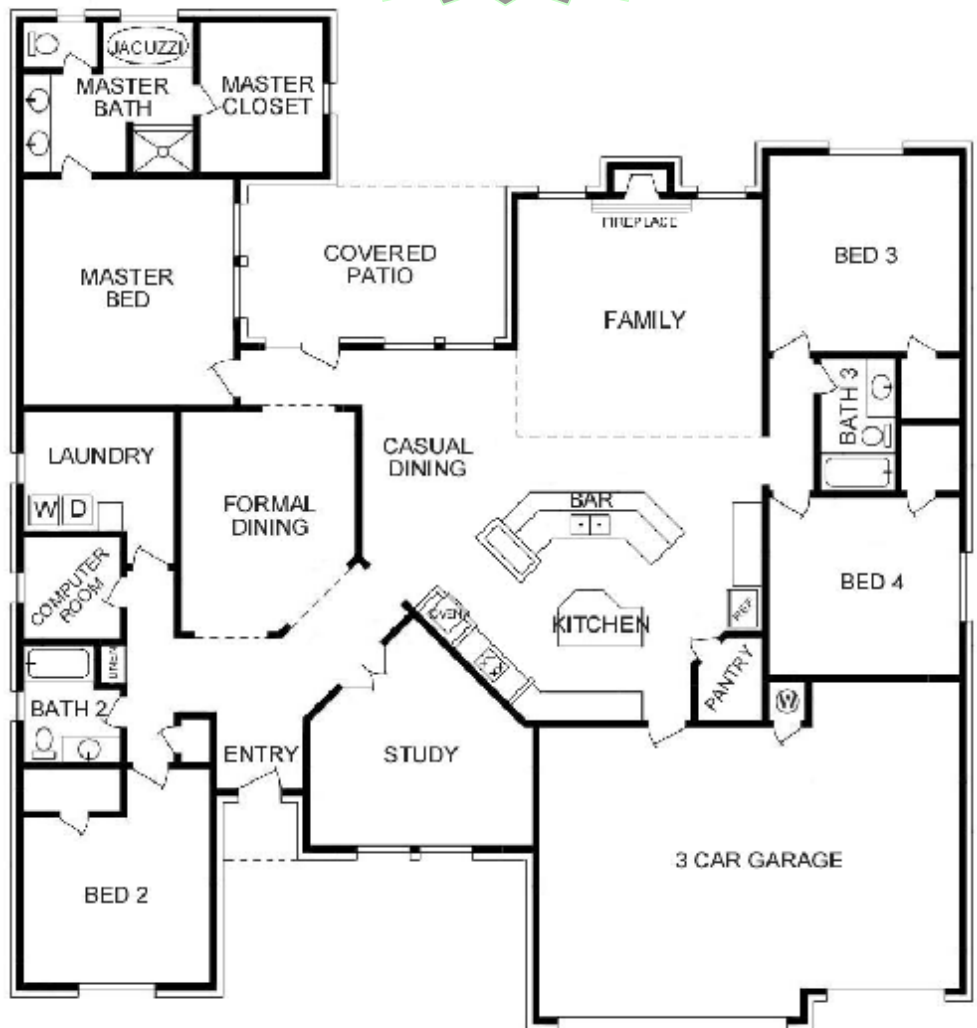


## Santa Fe Design

- 3,100 sq. ft. approx.
- 4 bedrooms
- 3 bathrooms
- Study
- Spacious kitchen
- Walk-in pantry
- 2 dining
- Family room
- Computer room
- Laundry room
- 3 car garage
- Snack bar at kitchen counter
- Whirlpool tub in master bath
- Gas fireplace
- Raised ceilings
- 2 x 6 exterior walls
- Double-pane windows
- Covered back patio and front porch



**100% Financing**



**Builder Sales**  
**Dee Hargis**  
**(405) 203-2110**  
E-mail:  
[Dee@BuilderSalesOKC.com](mailto:Dee@BuilderSalesOKC.com)  
WebSite:  
[www.BuilderSalesOKC.com](http://www.BuilderSalesOKC.com)

**Ask our  
Lender how  
\$500 can move  
you in this  
home!**